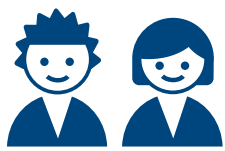


369 PTAs earned the 2022-2024 National PTA School of Excellence designation (across 35 state PTAs)



Over
280,980
Students
Served

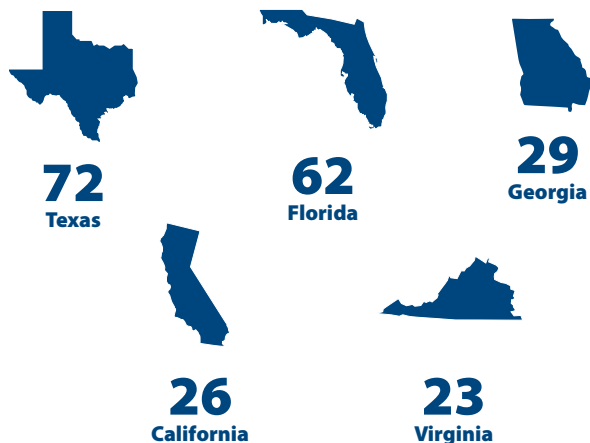


31%
Receive Free/
Reduced Lunch

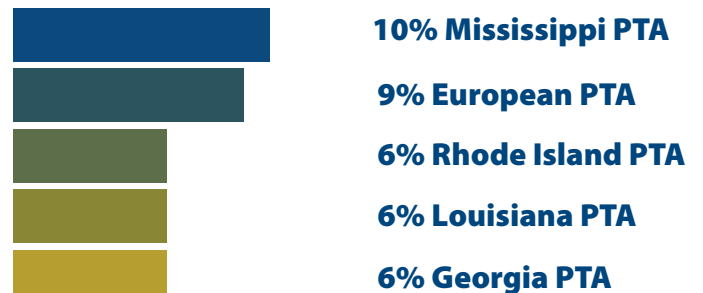


39%
Are Title I
Schools

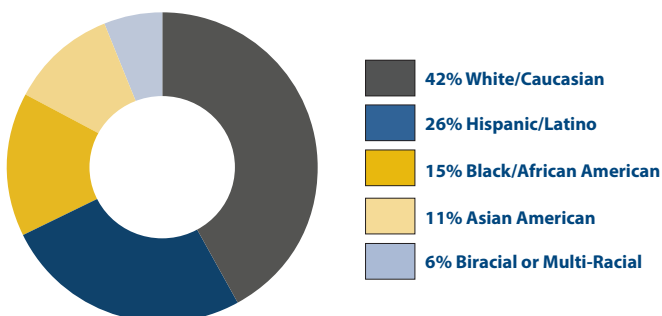
Top 5 States With the Most Designees



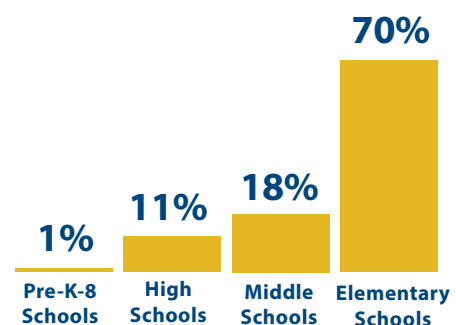
States with the Highest Percentage of Designees



Student Demographic Population



Schools of Excellence by Grade Range



School Principal Feedback

100%

of **school principals** perceived the program positively and reported that they would recommend the School of Excellence program to a fellow colleague.

97%

reported that the program added value to their school community.

94%

of school principals reported that they would participate in the program again.

PTA Leader Feedback

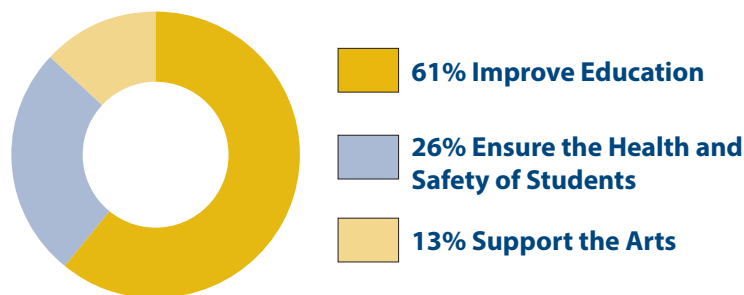
98%

of PTA program leaders perceived the program positively and believe the program added value to their school community.

96%

of PTA program leaders reported that they would participate in the program again.

School Improvement Top Priority Goals



National PTA School of
Excellence designations
awarded since August 2014

Testimonials from Schools of Excellence

"School of Excellence gives PTAs a structure for collecting member feedback and an approach to intentionally using it to shape their efforts. The process of collecting and using data this way to drive our efforts and measure their success is critical but may not come naturally to all PTA leaders. The SOE program's support in bringing this approach to local PTAs feels very valuable and impactful." Bailey Bridge Middle School, Virginia

"Receiving such a prestigious award builds trust from parents and promotes advocacy for leaders and faculty members to continually foster an inclusive, engaging relationship for all families. In return, it aids to provide an incredible educational experience for all of our children." Britt David Magnet Academy PTA, Georgia

"The School of Excellence program adds value to our campus and school culture. By being a part of this program we have seen our scholars' academic performance increase, as well as parent involvement." Collegiate Preparatory Elementary School Principal, Texas