



FAMILIES



**SCHOOL OF
EXCELLENCE**

everychild.onevoice.®



SCHOOLS

National PTA® School of Excellence 2015-2016 Results:

Engaging Families in Student
Success and School Improvements

**Fall 2016
PTA.org/Excellence**



National PTA[®] School of Excellence: Program Goal

At a **National PTA School of Excellence**, families feel welcomed and empowered to support student success, and PTA is a key partner for continuous school improvement.

Research shows that family engagement supports student success. **PTA's National Standards for Family-School Partnerships** were developed with national experts to reflect the latest research on ways parents, schools and communities can work together to support student achievement.

National Standards for Family-School Partnerships



- **Standard 1—Welcoming All Families Into the School Community.** Families are active participants in the life of the school and feel welcomed, valued and connected to each other, to school staff and to what students are learning and doing in class.
- **Standard 2—Communicating Effectively.** Families and school staff engage in regular, two-way, meaningful communication about student learning and well-being.
- **Standard 3—Supporting Student Success.** Families and school staff continuously collaborate to support students' learning and healthy development both at home and at school, and they have regular opportunities to strengthen their knowledge and skills to do so effectively.
- **Standard 4—Speaking Up for Every Child.** Families are empowered to be advocates for their own and other children, to ensure that students are treated fairly and have access to learning opportunities that will support their success.
- **Standard 5—Sharing Power.** Families and school staff are equal partners in decisions that affect children and families and together inform, influence and create school policies, practices and programs.
- **Standard 6—Collaborating With Community.** Families and school staff collaborate with community members to connect students, families and staff to expanded learning opportunities, community services and civic participation.

Through School of Excellence, PTAs and school partners gain customized recommendations, training and hands-on coaching as they work together to achieve the PTA National Standards for Family-School Partnerships.

National PTA[®] School of Excellence: Program Methodology

The School of Excellence designation is achieved when families' perceptions of the school demonstrate that the **PTA and school have implemented a high level of family engagement**, or when the **PTA and school have made a substantive, positive improvement in families' perceptions** since the beginning of the school year. This allows any PTA and school to participate.

The following graphic outlines the specific steps to becoming a **National PTA School of Excellence**. In the 2015-2016 school year, 41 PTAs and schools were renewing the designation, which requires the same steps for achievement.



Get Started

Build an inclusive team representing families, school staff and community members.

Conduct Family-School Partnership Scan

Submit family survey results that gauge perceptions of school and PTA efforts. Identify a shared school improvement goal.

Follow the PTA Roadmap to Excellence

Use the customized recommendations provided by National PTA to address barriers and expand methods of effective family and community engagement.

Measure Progress

Repeat family survey and submit results with a narrative that demonstrates how the PTA and school engaged more families in student success and school improvements.

Celebrate Excellence

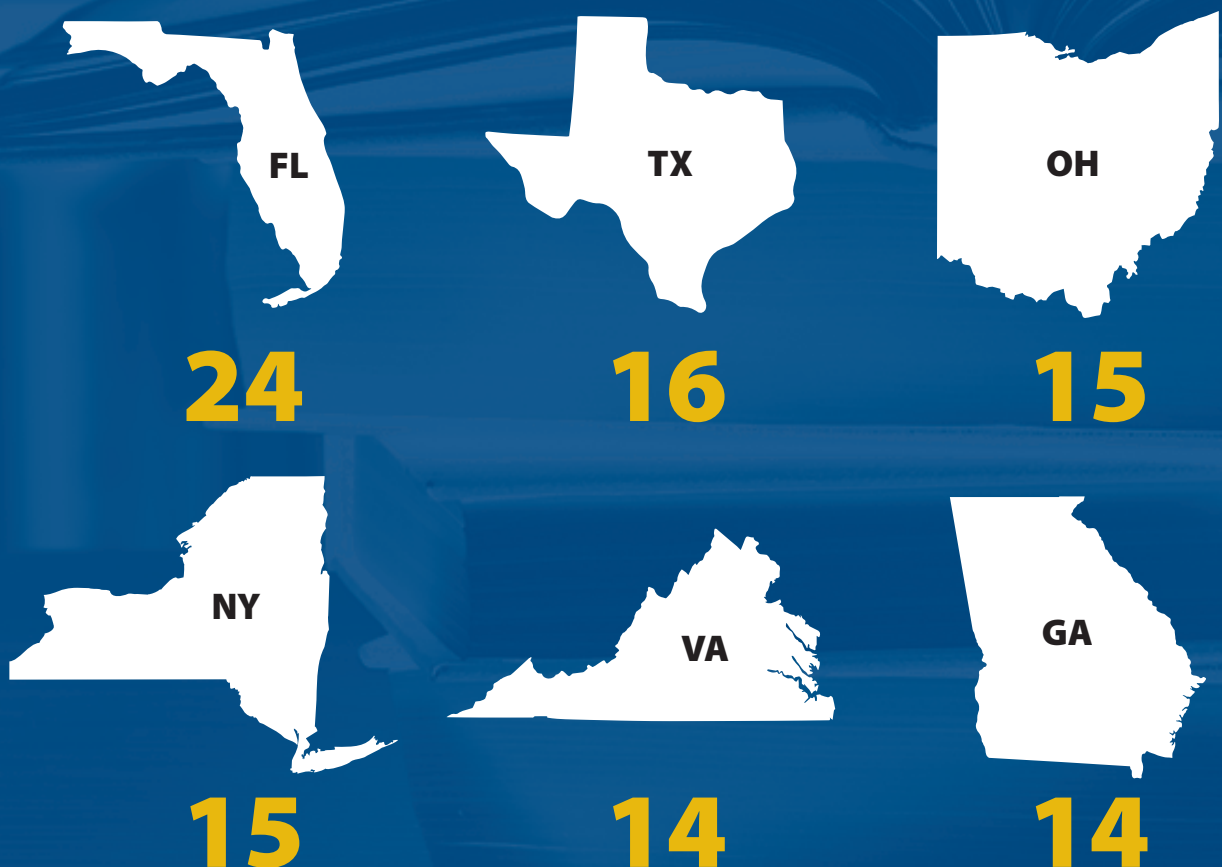
Achieve recognition by generating a high number of "Frequently" and "Always" responses from family surveys, and/or making substantial progress in family and community engagement during the school year.

About the 2016-2018 National PTA School of Excellence

Once achieved, recognition as a National PTA School of Excellence spans two years. The following describes the quantitative results for participation in **National PTA School of Excellence** in the 2015-2016 school year.

173 National PTA Schools of Excellence
in 32 State PTA Congresses, including one US
DoDEA School in Germany

Highest Recognition by State



Program Results



**Increase in
PTAs/
schools
recognized
from 2015**



**Since August 2014,
over 467 National
PTA School of
Excellence
designations
awarded**

**>50%
PTA[®]**

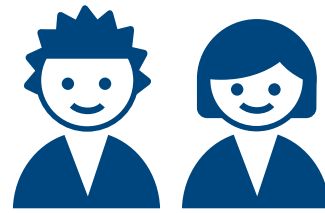
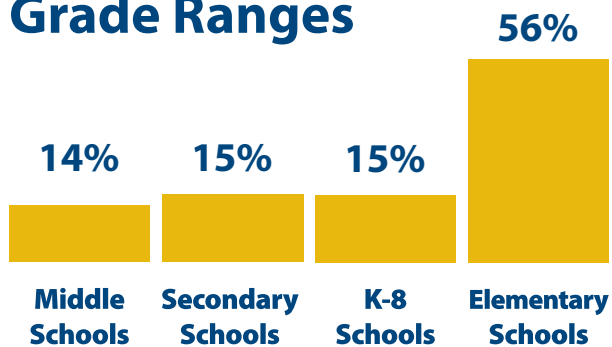
**reported a growth in PTA
membership or increased
PTA participation among
families and school staff**

"Our PTA Membership team made a huge push this year to get more family and community members and it paid off. We went from 475 members to 522."

– Hamilton Park Pacesetter Magnet PTA, Dallas, Texas

About the 2016-2018 National PTA Schools of Excellence

Grade Ranges



Serve over
134,000
students



42%
are Title 1 Schools

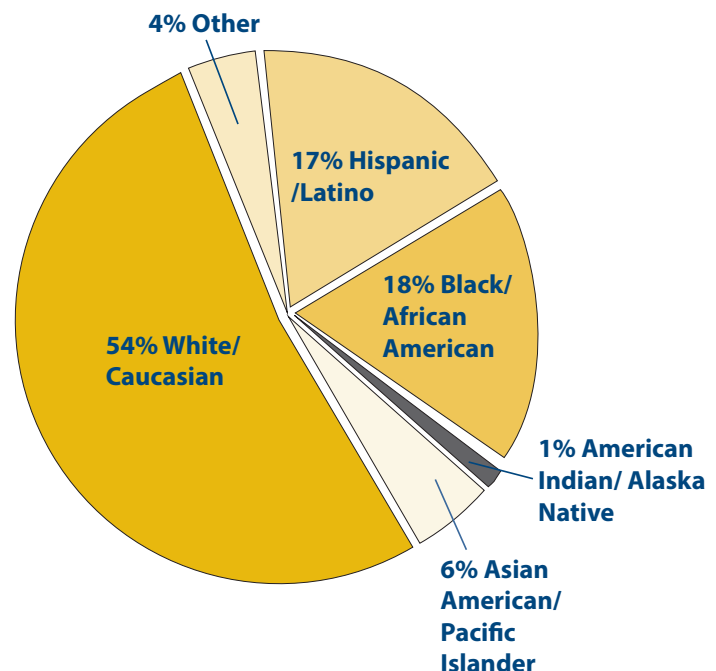


Two-thirds have greater than
30% of student
population eligible for
free/reduced price meals



27 schools have greater than
70% of students
eligible for free/reduced price meals

Demographic Breakdown of Student Population



Program Outcomes

In one school year, PTAs and schools that completed the National PTA School of Excellence program **improved family perception scores by an average of 30% across all indicators** of the PTA National Standards for Family-School Partnerships.

| Families Say Their PTA/School "Always" | FALL 2015: % of PTAs Indicating Majority of Families Responded "Always" (15,043 surveys) | SPRING 2016: % of PTAs Indicating Majority of Families Responded "Always" (14,527 surveys) | 2015-2016 School Year: % Increase in PTAs Reporting "Always" to Improved Family Perceptions of PTA/School and Increased Understanding of Family-School Partnerships |
|---|--|--|---|
| Welcome, value and respect families | 68% | 77% | +9% |
| Engage families in two-way, meaningful, timely and culturally communication | 64% | 72% | +8% |
| Inform families about what is expected in school and how to support student success | 64% | 78% | +14% |
| Care about and focus on the unique needs of every child | 68% | 79% | +11% |
| Give families equal power in decision-making about students' education and school improvement plans | 51% | 66% | +15% |
| Collaborate in the community and ensure school is a hub of community life | 59% | 75% | +16% |

School Improvement Top Priority Goals



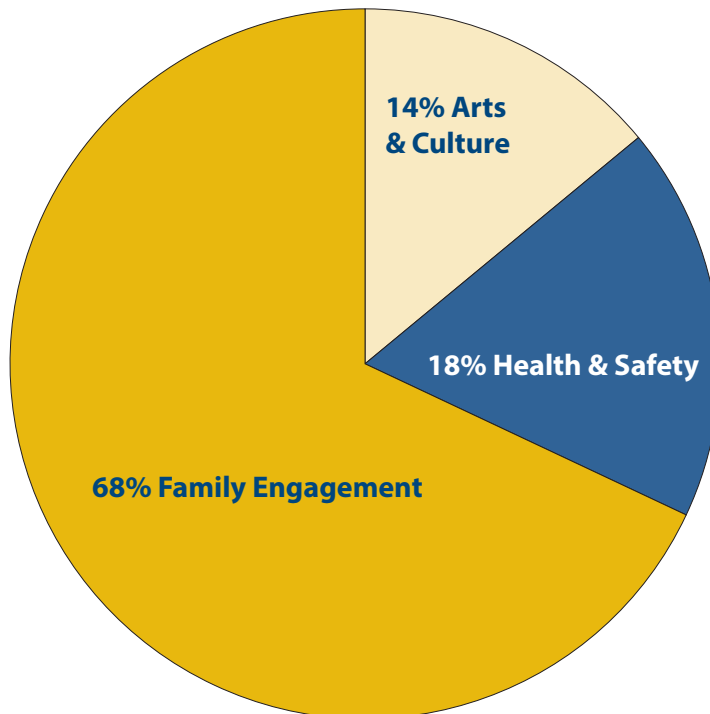
Family Engagement

- Increase family engagement and support student success in literacy, math and science
- Grow volunteer opportunities and volunteer participation among families
- Create a culture and climate that welcomes all families



Health & Safety

- Prevent all forms of bullying and encourage healthy peer relationships
- Promote healthy lifestyles at home and at school
- Support students' emotional and mental well-being



Arts Education

- Advocate for the value of arts in education
- Increase access to arts programs
- Build successful community partnerships in arts education

What PTAs are Saying

“We voted as a PTA to support the Dysart Unified School District Override Election and provided countless hours educating our families and the community on the importance of school funding that comes from the Override. We were successful and it passed allowing funding to return this fall. We have continued our school funding campaign by educating our families how to register to vote, where their polling places are located and how to contact our local representatives.”

— **Marley Park Elementary School PTA, Surprise, Ariz.**

“VCESPTA membership is at an all-time high of 400 members. VCESPTA's partnership with administration strengthens our support for student success, is a conduit of information and advocates for all students and families. We continue to reinforce and build new relationships with local businesses and organizations to grow our community beyond the VCES school walls.”

– **Van Cortlandtville Elementary PTA, Mohegan Lake, N.Y.**



Celebrating the 2016 Phoebe Apperson Hearst Award Recipients

The Phoebe Apperson Hearst Award—named after National PTA co-founder Phoebe Apperson Hearst—is the highest honor presented by the association to select **School of Excellence recipients**.

These awardees are recognized for their outstanding achievement in demonstrating why it's beneficial for families, educators, the PTA and the entire school community to focus on strengthening family-school-community partnerships.

2016 Phoebe Apperson Hearst Outstanding Family-School Partnership Award

GRAFENWOEHR ELEMENTARY PTA, DEPT. OF DEFENSE EDUCATION ACTIVITY (DODEA), APO, AE, GERMANY

With over 100 new students and three added classrooms, Grafenwoehr Elementary School (GES) PTA embarked on their path to renew their School of Excellence designation during the 2015-2016 school year with a focus on making sure all families felt welcomed, supported, engaged and connected to their PTA and school community.

The school increased the use of student-led conferences this year, making them a part of the traditional parent-conference conversation and letting them show their parents what they're learning in class. PTA leaders worked closely with the GES Student Council to gain input from the student body and involve them in the decision-making process.

The PTA also strengthened its community relationships by working closely with the German government and its local battalion, community and spouses club and Armed Forces Network.

College and Career Readiness

Grafenwoehr Elementary PTA hosted several family events that helped to strengthen connections among families and teachers and provided essential information to parents on how to support the implementation of the new College and Career Readiness curriculum.

"Events like Family Math Night gave [parents] an opportunity to experience and ask questions about some of the new methods that their kids are experiencing in the classroom," reported Grafenwoehr PTA leaders.

"Our goal was to present ourselves as a resource for families, staff and the community."

– Grafenwoehr Elementary PTA

Literacy

The PTA hosted the Read Across America program and the annual Spelling Bee, which resulted in a student earning 46th place in the Scripps National Spelling Bee.

Arts Education

There were a record number of Reflections entries and the PTA paired a “Reflections Night” with a General Membership Meeting so that students could experiment with dance, art and music while their parents participated in the business of the organization.

Healthy Lifestyles

Grafenwoehr Elementary PTA hosted “Try Day Friday” and “Try it if you Dare” for Halloween. Students and families sampled fresh, healthy foods and took home recipes for later. They also hosted Just Dance Family Dance Night, Family Zumba Night and Family Fun Runs. In addition, throughout the year, the PTA encouraged a Healthy Body Building Pledge, which followed the Army Fitness Triad and encouraged families to get enough sleep, fun exercise and servings of fruits and veggies each day.

Advocacy

The PTA led the charge to address parent and faculty input regarding bus safety, school parking issues, the availability of field trips, facility maintenance issues and the purchase of new technology for their classrooms. The school also hosted a number of small group gatherings with the District Superintendent and the Director of DoDEA Europe that allowed parents to give their feedback on how the school is doing across all areas.

“The city of Grafenwoehr has been a wonderful partner, sharing in school events like our annual Volksmarch and Fasching Parade, class visits to the Burgermeister and even visits by local Polizei and fire departments to teach our students valuable safety lessons.”

– **Grafenwoehr Elementary PTA**

2016 Phoebe Apperson Hearst Family-School Partnership Award of Merit

CENTENNIAL CAMPUS MAGNET MIDDLE SCHOOL PTSA, RALEIGH, N.C.

Centennial Campus Magnet Middle School PTSA leaders paved the way to lay the foundation for an effective family-school partnership with a new principal in the 2015-2016 school year.

Valuing the Diversity of the School Community

Centennial PTSA worked to welcome all families by focusing on intentional and sustained outreach to two traditionally under-represented groups of parents: Hispanic families, and dads and other male role models.

Centennial PTSA established a “Pack Men” group, which became an All Pro Dads chapter and hosted monthly All Pro Dad breakfasts for a group of 20 at-risk boys, many of whom don’t have positive male role models at home. The male volunteers developed relationships with each other and school staff to support student success by empowering, encouraging and inspiring the boys to make better choices, avoid negative behaviors and serve their community.

The PTSA reached out to Hispanic families by hosting a family engagement event at a neighborhood community center. They partnered with the school’s Student Services Team and Wake County Public Schools’ Parent Academies to present two workshops for families in Spanish: Dealing with Peer Pressure in Middle School and Test Taking and Anxiety.

“We used the School of Excellence program tools... as a springboard to open the lines of communication with our new administrators, teachers and families to achieve our joint goal of improving family engagement.”

– Centennial Campus Magnet Middle School PTSA

Supporting Student Success And Speaking Up for Every Child

Centennial PTSA provided parent education workshops at their annual Family Summit on underage drinking, internet safety, test taking and anxiety and Carol Dweck’s Growth Mind-set. They also hosted a Special Education Summit to connect families to the school’s special programs teachers and Wake County Public Schools’ Special Education Services team. The PTSA participated in North Carolina PTA’s Elected Officials Go to School program to

connect local School Board Representative and General Assembly members to families and students.

Parents served on the School Improvement Plan Team, the Health and Wellness Committee and a team of guidance counselors, a social worker and school psychologist to discuss student equity issues and how to bridge the achievement gap.

One of the Centennial PTSA leaders and an eighth grade student accompanied the school guidance counselor to the White House in February 2016 to participate in Michelle Obama's Reach Higher initiative.

"The PTSA has done a phenomenal job with collaborating to create programs that promote diversity, support, understanding and inclusion at Centennial Campus Middle School."

– Durenda Johnson-Ward, School Guidance Counselor/ASCA National School Counselor of the Year Finalist

Healthy Lifestyles

Centennial PTSA partnered with Food Bank of Central and Eastern North Carolina to host a school food pantry, which ultimately served an average of over 65 people per month.

The PTSA also partnered with the Southeast United Dairy Industry Association to provide families and students with information on eating better and being active. In fact, the school received a Fuel Up to Play 60

grant to fund its 100 Mile Club challenge—challenging students to walk 100 miles during the second semester—and school food pantry program.

Finally, the PTSA partnered with the North Carolina State Wellness Corp to connect college athletes to volunteer opportunities at the school. The athletes coached games, gave college tours and built relationships with at-risk youth.

"Our PTA Leaders are also working with the NCPTA and the Wake County Public Schools' Strategic Planning Committee to promote the National PTA School of Excellence program as the standard for improving family engagement countywide."

– Centennial Campus Magnet Middle School PTSA

2016 Phoebe Apperson Hearst Family-School Partnership Award of Merit

NEW CENTURY TECHNOLOGY HIGH SCHOOL PTSA, HUNTSVILLE, ALA.

A first-time recipient of the School of Excellence designation, New Century Technology High School (NCTHS) PTSA focused their family and community engagement efforts on communicating effectively to empower families to support student success.

The PTSA co-hosted the NCTHS orientation and fair for prospective eighth grade students. They expanded their communications channels, using a new website, newsletter, text messages and social media accounts to share information about PTSA and school programs, events and news.

NCTHS PTSA designed a program called Success by the Slice to support student success by presenting educational seminars focused on life skills during students' lunch period—with free pizza—to foster a more welcoming environment. Parents and teachers were also invited and various guest speakers led the popular sessions on topics such as how to select a college and interview techniques.

The PTSA also won a \$5,000 Lowe's Toolbox for Education grant to support the NCTHS robotics team, which did not have up-to-date lab equipment. The grant allowed the team to develop a plan that would provide the tools and work stations that would help students learn more and compete at a higher level.

Giving Parents a Voice in School Policies And Improvements

The PTSA started a new initiative to strengthen family-school partnerships—Coffee with the Principal. Every other month, breakfast and coffee were served as the principal answered questions from 20 to 30 parents.

The NCTHS PTSA Board also advocated for the safety of all students, teachers and families crossing the railroad tracks within viewing distance of the doors to the school. The PTSA board members were alarmed the crossing did not have safety arms that are lowered when the trains pass. The board continues to advocate to city officials to secure railroad arms for the safety of the students and families.

"Coffee with the Principal was a casual, intimate setting that provided a comfortable environment and gave the parents a safe venue to voice concerns, hear news about the school district, provide feedback on proposed changes and enjoy fellowship."

– New Century Technology High School PTSA

Congratulations to the 2016-2018 National PTA Schools of Excellence

ALASKA

- Campbell Elementary PTA, Anchorage, AK
- Rabbit Creek PTA, Anchorage, AK

ALABAMA

- Floyd Middle Magnet School PTSA, Montgomery, AL
- Hampton Cove Middle School PTA, Hampton Cove, AL
- Mountain Gap PTA, Huntsville, AL
- New Century Technology High School PTSA, Huntsville, AL
- Ramsay High School PTSA, Birmingham, AL
- William J. Christian School PTSA, Birmingham, AL

ARIZONA

- Crismon Elementary PTA, Mesa, AZ
- Marley Park PTA, Surprise, AZ

CALIFORNIA

- Esther Lindstrom PTA, Cerritos, CA
- Henry W. Longfellow Elementary PTA, Long Beach, CA
- Jefferson Elementary PTA, Redondo Beach, CA

COLORADO

- Jenkins Middle School PTA, Colorado Springs, CO
- Marshdale PTA, Evergreen, CO
- Pennington Elementary, Wheat Ridge, CO

CONNECTICUT

- Holland Hill School PTA, Fairfield, CT

FLORIDA

- Coral Gables Preparatory Academy PTSA, Coral Gables, FL
- Curlew Creek Elementary PTA, Palm Harbor, FL
- Cypress Springs Elementary PTA, Orlando, FL
- Douglas Jamerson Jr. Elementary PTA, St. Petersburg, FL
- Eagles Landing PTSA, Boca Raton, FL
- Explorer K-8 PTSA, Spring Hill, FL
- Frank C. Martin International K-8 Center PTSA, Miami, FL
- George M. Steinbrenner High School PTA, Lutz, FL
- Gorrie Elementary PTA, Tampa, FL
- Grace Ippolito Elementary PTA, Riverview, FL
- H.B. Plant High School PTSA, Tampa, FL
- Hidden Oak Elem PTA, Lake Worth, FL
- Hillcrest Elementary PTA, Orlando, FL
- Julia Landon College Prep PTSA, Jacksonville, FL
- Lewis Elementary PTA, Temple Terrace, FL
- Lithia Springs Elementary School PTA, Valrico, FL
- MacFarlane Park PTA, Tampa, FL
- Miami Palmetto Senior High PTSA, Pinecrest, FL
- Pleasant Grove Elementary PTA, Pensacola, FL
- San Pablo Elementary PTA, Jacksonville Beach, FL
- Sandpiper Shores Elementary PTA, Boca Raton, FL
- Silver Lakes Elementary PTSA, Miramar, FL
- Stanton College Preparatory School PTSA, Jacksonville, FL
- West Riverside PTA, Jacksonville, FL

DEPARTMENT OF DEFENSE SCHOOL (GERMANY)

- Grafenwoehr Elementary School PTA, APO (Germany)

GEORGIA

- Briarlake Elementary School PTA, Decatur, GA
- Charles Ellis Montessori Academy PTA, Savannah, GA
- Chattahoochee High School PTSA, Johns Creek, GA
- Fort Middle School PTA, Columbus, GA
- Carrie E. Gould Elementary PTA, Savannah, GA
- Hillgrove High School PTSA, Powder Springs, GA
- Hillside Elementary PTA, Roswell, GA
- King Springs Elementary School PTA, Marietta, GA
- Lockheed Elementary PTA, Marietta, GA
- Morrow High School PTSA, Morrow, GA
- New Hampstead High School PTSA, Pooler, GA
- Pooler Elementary PTA, Pooler, GA
- Sope Creek Elementary PTA, Marietta, GA
- Tritt PTA, Marietta, GA

ILLINOIS

- John C. Dunham STEM Partnership School PTSA, Aurora, IL
- Kreitner PTA, Collinsville, IL

KANSAS

- Shawnee Mission North High School PTSA, Merriam, KS
- Wyandotte High School PTSA, Kansas City, KS

KENTUCKY

- Cane Run Elementary School PTA, Louisville, KY
- Lafayette High School PTSA, Lexington, KY
- Lincoln Performing Arts PTA, Louisville, KY
- Price PTA, Louisville, KY
- Veterans Park Elementary PTA, Lexington, KY

LOUISIANA

- Fairfield Elementary Magnet PTA, Shreveport, LA
- Marigny Elementary PTA, Mandeville, LA

MAINE

- PCIS PTA, Plymouth, MA

MARYLAND

- Glade Elementary PTA, Walkersville, MD
- Judith P. Hoyer Montessori PTA, Bowie, MD
- Spring Ridge Elementary School PTA, Frederick, MD
- Stevens Forest Elementary PTA, Columbia, MD

MICHIGAN

- Brooklands Elementary PTA, Rochester Hills, MI
- Hampton PTA, Rochester Hills, MI
- Long Meadow PTA, Rochester Hills, MI
- Rochester Adams PTA, Rochester Hills, MI

MISSOURI

- Fairview Elementary PTA, Columbia, MO
- New Bloomfield PTA, New Bloomfield, MO
- Park Hill Prairie Point Elementary PTA, Kansas City, MO
- Union Chapel Elementary PTA, Parkville, MO

MISSISSIPPI

- McWillie Elementary School PTA, Jackson, MS

NORTH CAROLINA

- 71st High School PTSA, Fayetteville, NC
- Bowley Elementary School PTA, Fort Bragg, NC
- Centennial Campus Middle School, Raleigh, NC
- East Garner Elementary PTA, Garner, NC
- Pittman Elementary School PTA, Enfield, NC
- Wakefield Elementary School PTA, Raleigh, NC
- Weatherstone Elementary School PTA, Cary, NC
- William A. Hough High School PTSA, Cornelius, NC

NEW JERSEY

- Florence Ave School PTA, Irvington, NJ
- Laurence Harbor Memorial School PTA, Old Bridge, NJ

NEW MEXICO

- Capitan Municipal PTA (Elementary), Alto, NM
- Capitan Municipal PTA (Middle), Alto, NM
- Capitan Municipal PTA (High), Alto, NM
- La Cueva High School PTA, Albuquerque, NM

NEVADA

- John C. Vanderburg PTA, Henderson, NV
- Northside Elementary PTA, Elko, NV
- Richard Bryan PTA, Las Vegas, NV
- Scherkenbach PTA, Las Vegas, NV

NEW YORK

- Baldwin Middle School, Baldwin, NY
- Delevan Elementary PTA, Delevan, NY
- Dodge Elementary School PTA, East Amherst, NY
- Hamburg Central PTSA, Hamburg, NY
- Heim Elementary School PTA, Williamsville, NY
- Heim Middle School PTSA, Williamsville, NY
- Huth Road PTA, Grand Island, NY
- Lincoln Titus PTA, Cortlandt Manor, NY
- Meadow School PTA, Baldwin, NY
- Milton Terrace Elementary PTA, Ballston Spa, NY
- Putnam Valley PTA, Putnam Valley, NY
- Van Cortlandtville Elementary PTA, Mohegan Lake, NY
- Webster Central PTSA – Klem Road North Elementary, Webster, NY
- Webster Central PTSA – Spry Middle School, Webster, NY
- Webster Central PTSA – Willink Middle School, Webster, NY

OHIO

- Brookview Elementary PTA, Brook Park, OH
- Dentzler Elementary PTA, Parma, OH
- Falls Lenox Primary PTA, Olmsted Falls, OH
- Green Valley PTA, Parma, OH
- Hillside Middle School PTA, Seven Hills, OH
- John Muir PTA, Parma, OH
- Kirtland PTA, Kirtland, OH
- North Ridgeville Education Center/Early Childhood Learning Center PTA, North Ridgeville, OH
- Olmsted Falls High School PTA, Olmsted Falls, OH
- Olmsted Falls Intermediate PTA, Olmsted Falls, OH
- Olmsted Falls Middle School PTA, Olmsted Falls, OH
- Parma Senior High PTSA, Parma, OH
- Shiloh Middle School PTA, Parma, OH
- Stiles Elementary School PTA, Columbus, OH
- Valley Vista PTA, North Royalton, OH

PENNSYLVANIA

- West Mifflin High School PTSA, West Mifflin, PA
- West Mifflin Middle School PTSA, West Mifflin, PA

RHODE ISLAND

- Old County Road School PTA, Smithfield, RI
- Orlo Avenue PTA, East Providence, RI

TENNESSEE

- Bon Lin Middle PTSA, Bartlett, TN

TEXAS

- Ab Harrison Intermediate School PTA, Wylie, TX
- Bonnie Ellison Elementary School PTA, San Antonio, TX
- Brooks Wester Middle School PTA, Mansfield, TX
- Commonwealth Elementary, Sugar Land, TX
- Dr. John M. Folks Middle School PTA, San Antonio, TX
- E. Hickman Elementary PTA, Garland, TX
- Gene Pike Middle PTA, Justin, TX
- Heather Glen Elementary PTA, Balch Springs, TX
- Hamilton Park Pacesetter Magnet PTA, Dallas, TX
- John Tyler High School PTA, Tyler, TX
- Liberty Elementary School PTA, Flower Mound, TX
- Mary Lillard PTA, Mansfield, TX
- McCoy Elementary PTA, Carrollton, TX
- Northwest High PTSA, Justin, TX
- Ralph Parr PTA, League City, TX
- Routh Roach Elementary PTA, Garland, TX

UTAH

- Pony Express Elementary PTA, Eagle Mountain, UT

VIRGINIA

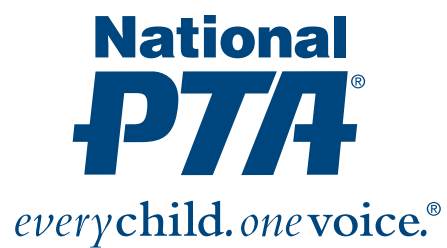
- Cherry Run Elementary School, Burke, VA
- Clermont Elementary PTA, Alexandria, VA
- EB Stanley Middle School PTA, Abington, VA
- Ecoff Elementary School PTA, Chester, VA
- Ferry Farm Elementary PTA, Fredericksburg, VA
- Hickory High School PTSA, Chesapeake, VA
- Lafayette High School PTA, Williamsburg, VA
- Matoaka Elementary PTA, Williamsburg, VA
- Pole Green Elementary PTA, Mechanicsville, VA
- Princess Anne Middle School PTA, Virginia Beach, VA
- Rena B. Wright Primary PTA, Chesapeake, VA
- Riverside Elementary PTA, Alexandria, VA
- Southeastern Elementary PTA, Chesapeake, VA
- Woodstock Elementary School PTA, Virginia Beach, VA

WASHINGTON

- Apollo Elementary PTA, Renton, WA
- Daffodil Valley PTA, Bonney Lake, WA
- Hazen High School PTSA, Newcastle, WA
- Madrona PTA, SeaTac, WA
- Orting Combined PTA, Orting, WA
- Phantom Lake PTA, Bellevue, WA
- Snoqualmie PTSA, Snoqualmie, WA

WYOMING

- Bar Nunn Elementary PTA, Bar Nunn, WY



National Office

1250 North Pitt Street

Alexandria, VA 22314

Toll-Free: (800) 307-4PTA (4782)

Fax: (703) 836-0942

PTA.org/Excellence