



Year-End Assessments Survey

Initial Findings from a Nationwide Survey of Public-School Parents

February 2021

Research
conducted by:



National Online Parent Survey:

- Nationwide sample of **1,550 parents and guardians** with children in public school, grades K-12, including
 - 666 elementary school parents
 - 364 middle school parents
 - 520 high school parents
 - 453 Black parents
 - 440 Hispanic parents representing a mix of acculturation levels
- Fielded January 21- February 2, 2021
- Offered in both English and Spanish
- Data were weighted to be representative of public-school parents in the U.S.
- Research design was informed by past qualitative (focus groups) and quantitative research conducted for National PTA and Learning Heroes

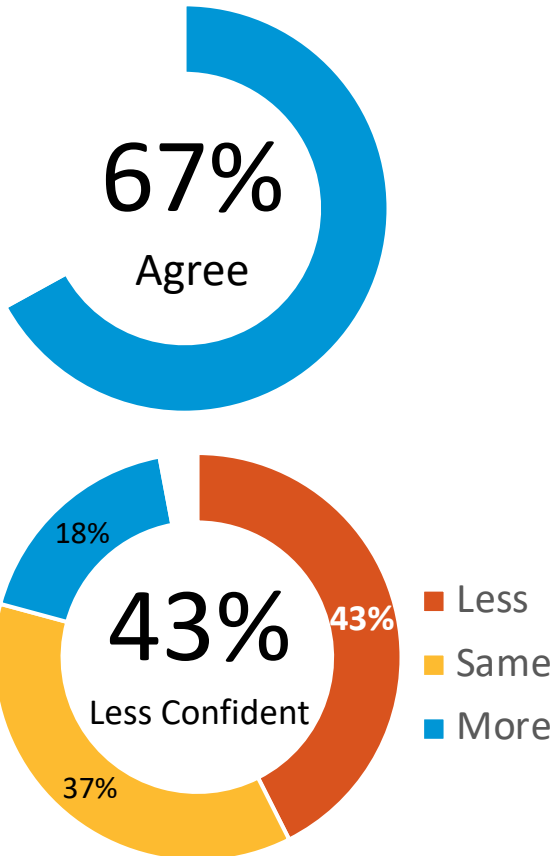
Throughout this report, **blue/red** indicates statistically **higher/lower** differences between audiences

▲▼ Indicate statistically significant changes between the initial favor/oppose assessment question and the second favor/oppose assessment question.

Parents are more engaged than ever but less confident in knowing where their children stand academically

- Most believe their child is behind where they would be in a normal year.

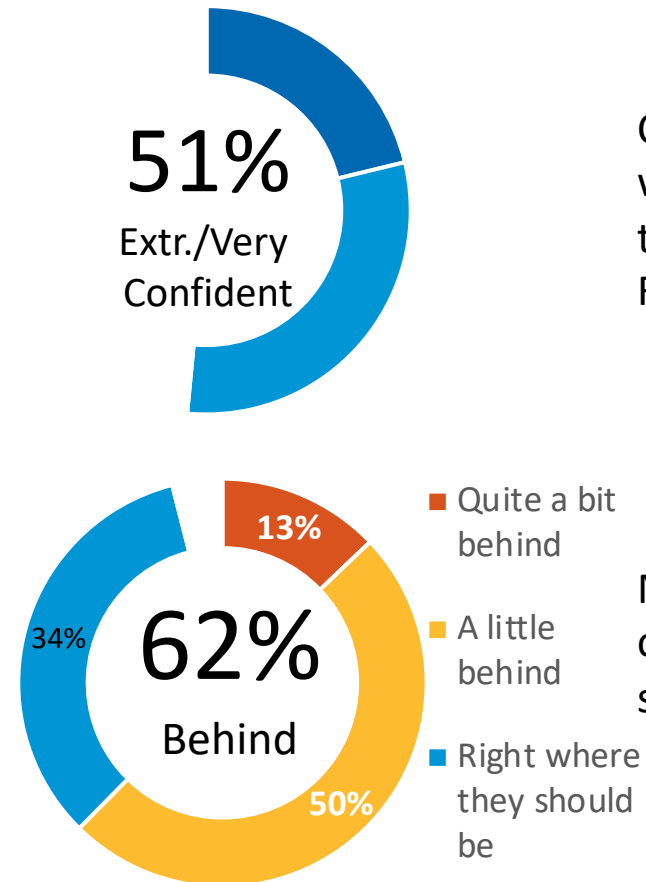
Engagement without Clarity on Achievement



I am more connected with my child's day-to-day education now than ever before.

Confidence that I have a clear understanding of how well my child is achieving academically compared to a typical year

Concerns About Where Child Should Be



Confident that my child will be well prepared for the next grade (starting Fall 2021)

My child academically, compared to a normal school year

A majority of parents favor end-of-year state testing this Spring

- Overall support is higher among Hispanic parents (57%) than Black (49%) or white (51%) parents.

Do you favor or oppose schools conducting year-end state testing this Spring (Spring 2021) to measure the pandemic's impact on student learning?



52%

Favor

Net Favor: +28



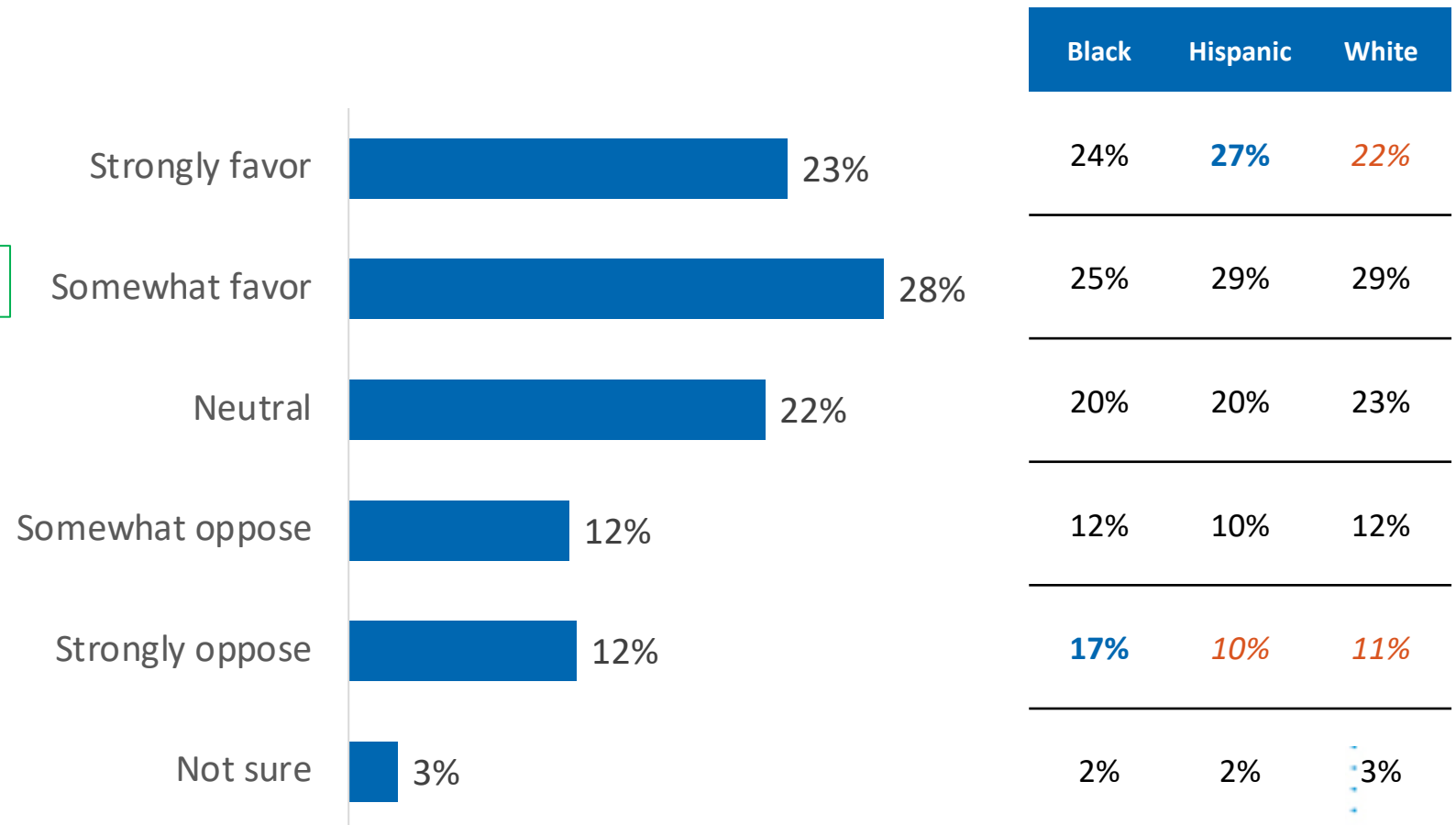
24%

Oppose



25%

Neutral/Not sure



Demographic Breakdown of Support



52%

Favor

Significantly More Likely to **FAVOR** Testing This Year

- Involved in PTA (62%)
- Parents whose students have an IEP or 504 (61%)
- Urban (60%)
- Household income \$100k+ (59%)
- Democrats (58%)
- Hispanics (57%)



24%

Oppose

Significantly More Likely to **OPPOSE** Testing This Year

- Independents (27%)
- Suburban parents (27%)
- Remote learning is primary learning mode (27%)



25%

Neutral/Not sure

Significantly More Likely to **BE NEUTRAL** About Testing This Year

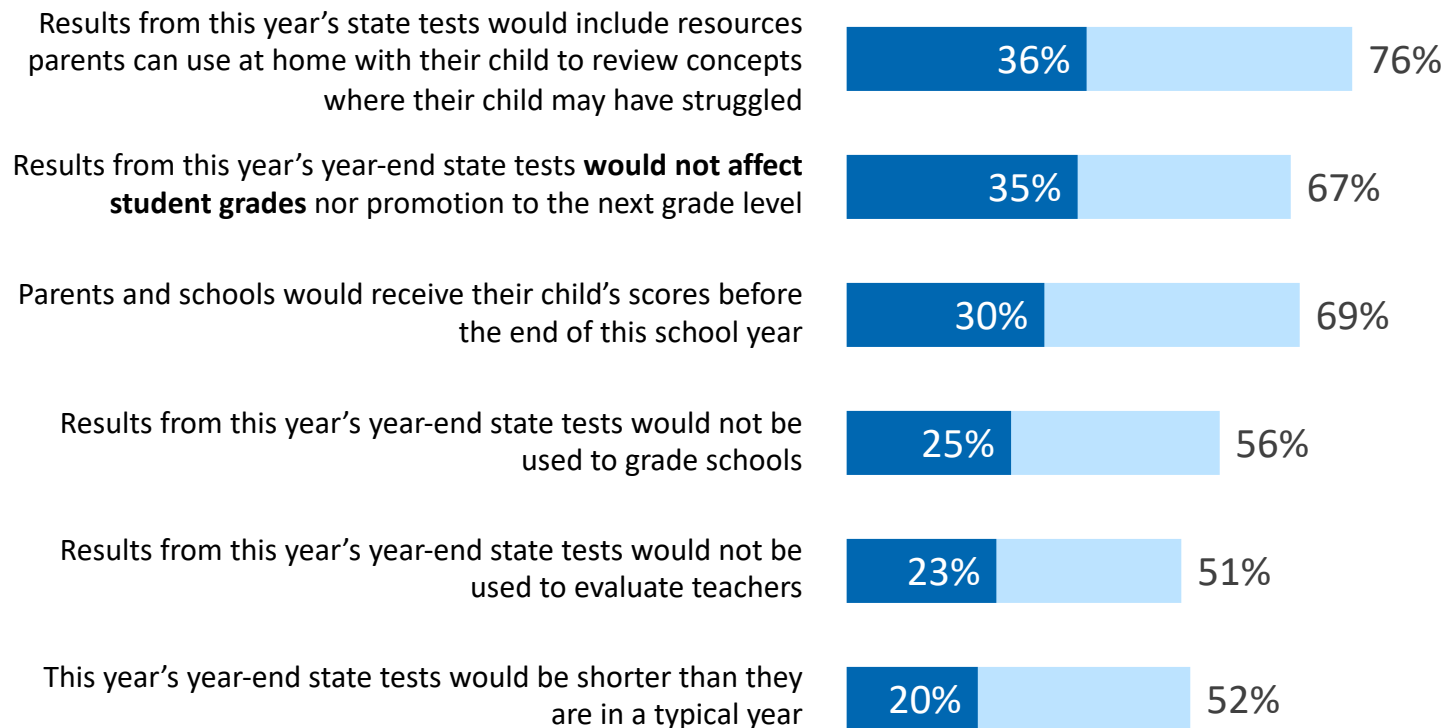
- Household income under \$25k (33%)
- HS or less education (32%)
- Small town/Rural (29%)

For this year, parents want the stakes lowered and resources to use at home to support learning

- Lowering the stakes is especially important to those initially opposed to testing this year and parents of color.

How important is each change is for this year's state test?

■ Extremely Important
 ■ Extremely + Very Important



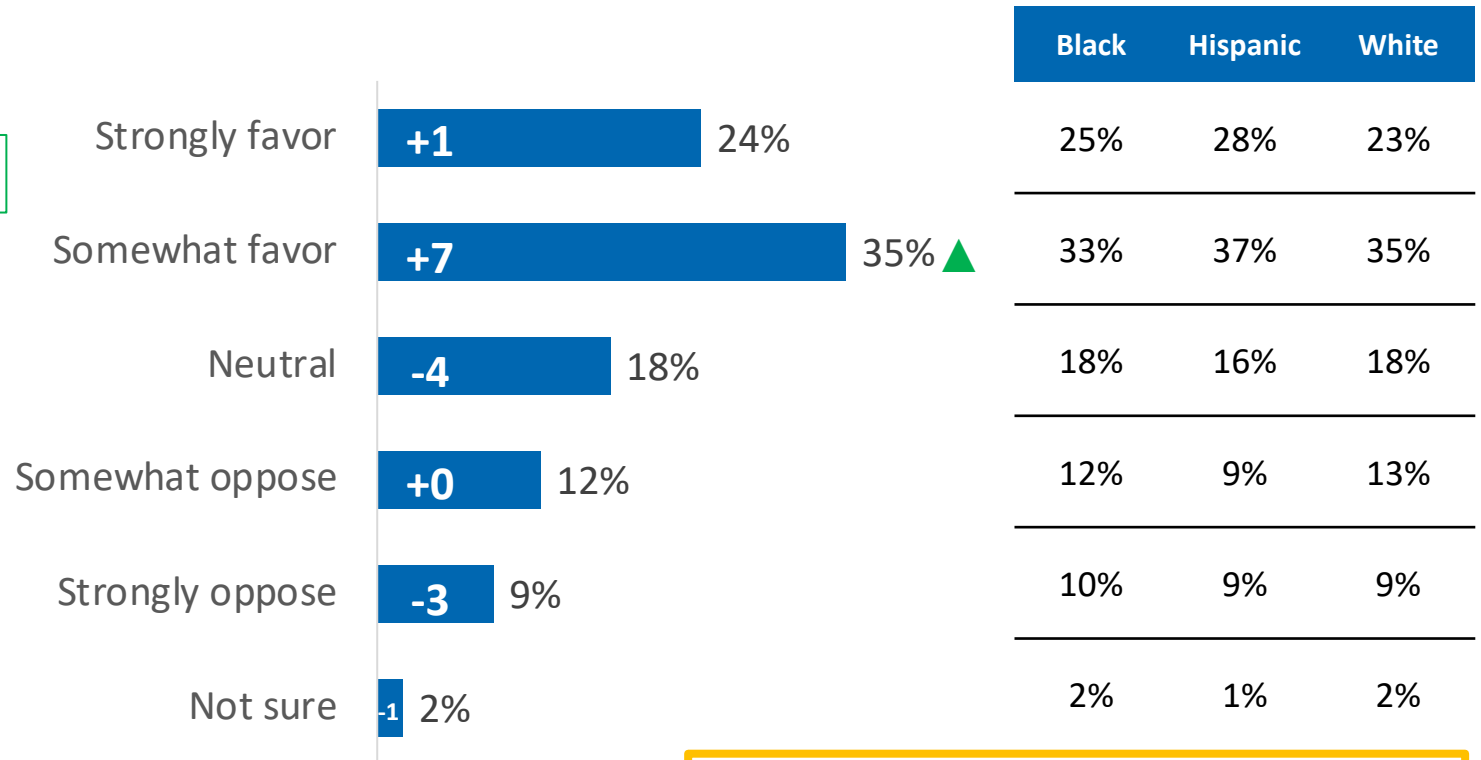
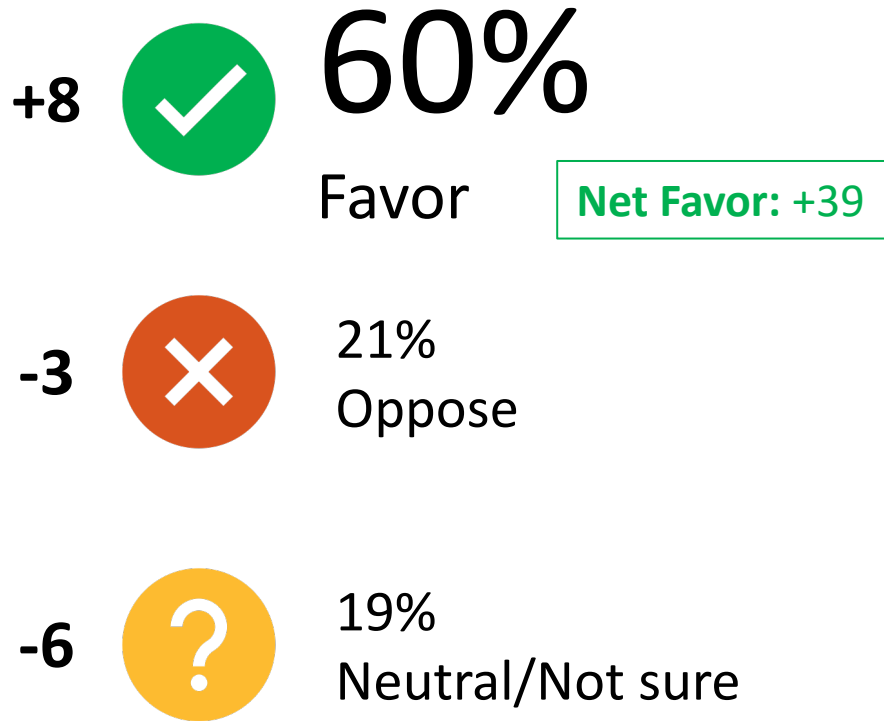
	Initial Stance		Race/Ethnicity		
	Favored	Opposed	Black	Hispanic	White
Results from this year's state tests would include resources parents can use at home with their child to review concepts where their child may have struggled	85%	73%	82%	82%	74%
Results from this year's year-end state tests would not affect student grades nor promotion to the next grade level	69%	79%	71%	74%	64%
Parents and schools would receive their child's scores before the end of this school year	80%	61%	76%	78%	64%
Results from this year's year-end state tests would not be used to grade schools	58%	67%	56%	64%	54%
Results from this year's year-end state tests would not be used to evaluate teachers	53%	58%	51%	59%	48%
This year's year-end state tests would be shorter than they are in a typical year	54%	58%	58%	62%	47%

Extremely + Very Important

There is a significant increase in support after showing possible changes and messaging (for and against)

- However, this comes mainly in the form of soft support (somewhat favor).

Now that you've seen some additional thoughts about year-end state testing, do you favor or oppose schools conducting year-end state testing this Spring (Spring 2021) to measure the pandemic's impact on student learning?



Shift to Favor: +9 +9 +7

Research Team:

Adam Burns | 703-842-0209 | burns@edgeresearch.com

Karen Emmerson | 703-842-0206 | emmerson@edgeresearch.com

Erica Gray | 571-302-6276 | erica_gray@hcmstrategists.com

Bibb Hubbard | 202-286-9819 | bhubbard@learningheroes.org

Amanda Lowe | 703-518-1200 | alowe@pta.org

Beth Rorick | erorick@pta.org

Cindi Williams | 703-968-4465 | cfwilliams@cfwilliams.com

Edge Research

1560 Wilson Blvd, Suite 475

Arlington, VA 22209

www.edgeresearch.com