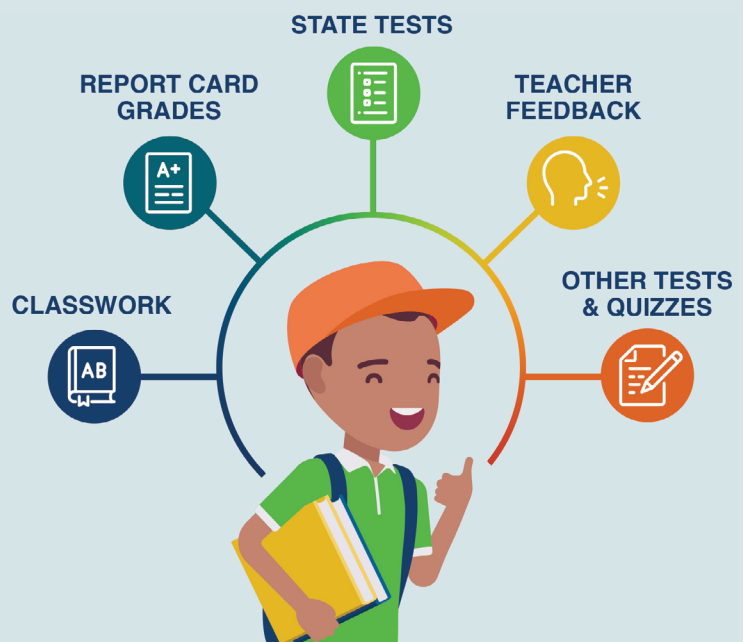




A FAMILY GUIDE TO ANNUAL STATE TESTS IN LOUISIANA: One of Many Measures of Student Learning

There are many ways to measure academic performance, and annual state tests are only one of them. These tests are not meant to tell the whole story. They are meant to be combined with other measures, including teacher feedback, classwork and projects, and report card grades. Together, these measures can give families a more complete picture of a student's performance so they can better support learning at home and advocate for their child.



State Assessments 101

The Every Student Succeeds Act or ESSA, requires students to take state tests in reading and math every year in third through eighth grade and once in high school. In Louisiana, students in third through eighth grade take the Louisiana Educational Assessment Program 2025 (LEAP 2025) in English language arts, math and science. High school students take the LEAP 2025 in English 1 and 2, Algebra 1, Geometry, U.S. History and Biology.

To earn a diploma, high school students must achieve a Level 3 or higher on at least one test in English, math and in social studies or science. Students can retake a test if they need to and there are other options for students to demonstrate they have learned the materials that can be decided by teachers and school leaders.

A Focus on Grade Level Skills

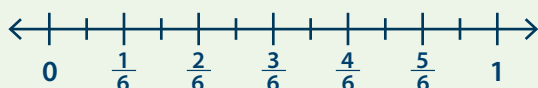
Unlike other tests, LEAP 2025 is focused on grade level material and is aligned to the state standards. The test questions match what students do and learn in the classroom every day throughout the year, which are the skills that are most important for students to learn in order to move on to more challenging content.

LEAP 2025 is taken online in fifth grade and above. Districts have the option to use paper and pencil tests for students in third and fourth grade. The test includes a variety of different types of questions, including short answer, traditional multiple choice, ones that ask students to build equations and questions that require students to write well developed essays.

Grade 6: Math

Explain how to find $2 \times \frac{5}{12}$ using the number line.

Find the product.



Enter your answer and your explanation in the box provided.

Grade 3: ELA

Part A

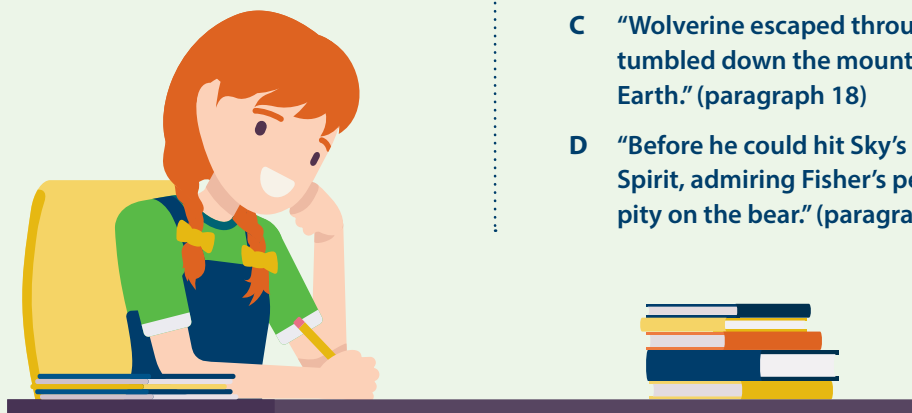
What is the central message of “How Big Bear Stuck to the Sky”?

- A Stealing is never the right thing to do.
- B Working hard to complete a task will be rewarded.
- C Real friends do not abandon each other, especially in times of need.
- D People will fight to protect what is theirs, even if they should share it.

Part B

Which sentence from “How Big Bear Stuck to the Sky” supports the answer to Part A?

- A “So hard was the floor between Earth and Sky that Sun could not peek through to warm the ground.” (paragraph 1)
- B “He jumped again and again, widening the crack into a hole.” (paragraph 12)
- C “Wolverine escaped through the hole and tumbled down the mountainside back to Earth.” (paragraph 18)
- D “Before he could hit Sky’s floor, the Great Spirit, admiring Fisher’s persistence, took pity on the bear.” (paragraph 19)



Useful Information for All

FAMILIES: Understanding Grade Level Performance

The LEAP 2025 report gives families information on how well their child performed on different sets of skills in each subject. Families can use this information to identify where their child is doing well and where they may need support or practice. This helps families better support learning at home. It can also help them start meaningful conversations with teachers, set goals for each student's areas of improvement and identify resources and strategies that can be used at home and in school to help students make progress.

Questions to Ask the Teacher about Your Child's Leap 2025 Report:

- What does this mean about my child's learning?
- Is my child on grade level?
- Where does my child need more support or improvement?
- What short-term learning goals should my child meet to show progress?
- How can I support learning at home?



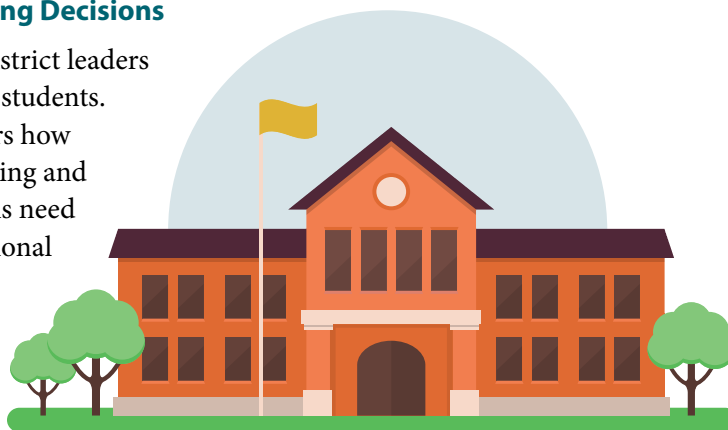
TEACHERS: Informing Instruction

Students take different types of tests throughout the school year. Some students take benchmark or diagnostic tests, such as MAP Growth or i-Ready. These are taken several times a year and measure mastery of important concepts and skills in reading and math. Students take a test at the beginning of the year to identify their “starting point” and again throughout the year to measure their progress. Benchmark tests help teachers identify and address learning gaps early on so students can stay on track to meet grade level expectations. While LEAP 2025 is only given at the end of the school year, it is one way of showing how much progress students made from the beginning of the year and how well they met grade level expectations.

While teachers use LEAP 2025 results to understand each student's unique needs and support them in the areas where they need extra help, they also help teachers to improve their instruction. Teachers can use the results to look for trends in their students' learning to see what skills or concepts students learned and what content they struggled with. This helps teachers identify what they taught effectively and where they need to improve or change their instructional strategies.

SCHOOL & DISTRICT LEADERS: Informing Decisions

LEAP 2025 results are critical for school and district leaders to make informed decisions about schools and students. School and district level test scores show leaders how students across a school or district are performing and indicate if a certain group of students or schools need more support. This allows them to target additional support or resources to help those schools improve. District leaders can also use test scores to understand what strategies and changes are working.



STATE LEADERS: Helping Schools Improve

State leaders use LEAP 2025 results to identify schools and districts that need more support and resources. They identify the schools with the lowest performance in the state, as well as schools with certain groups of students that performed much lower on the test than the rest of the students in that school. These schools receive additional funding and resources from the state to support students and teachers. For example, schools may hire more teachers or tutors or they may purchase additional instructional materials and programs, depending on the needs of their students.

Where Can I Go for More Information?

- For more information, visit LouisianaBelieves.com/MeasuringResults/Grades-3-8-Assessments
- For a guide to the LEAP 2025 report, visit LouisianaBelieves.com/Docs/Default-Source-Assessment/Parent-Guide-to-the-Leap-2025-Student-Reports
- To see a practice test, visit LouisianaBelieves.com/Resources/Library/Practice-Tests?
- For ideas on how to support your child's learning at home, visit PTA.org/FamilyGuides
- For more information about the Louisiana PTA LouisianaPTA.com/

