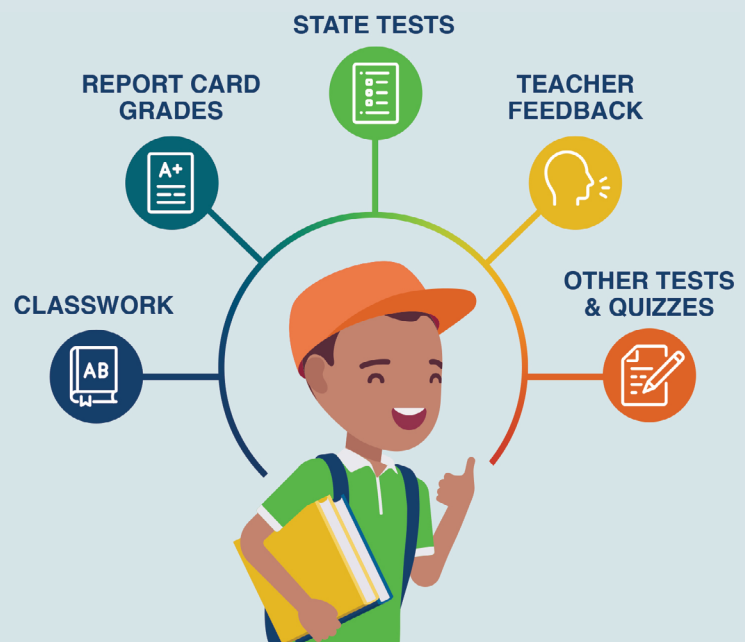




A FAMILY GUIDE TO ANNUAL STATE TESTS IN KENTUCKY: One of Many Measures of Student Learning

There are many ways to measure academic performance, and annual state tests are only one of them. These tests are not meant to tell the whole story. They are meant to be combined with other measures, including teacher feedback, classwork and projects, and report card grades. Together, these measures can give families a more complete picture of a student's performance so they can better support learning at home and advocate for their child.



State Assessments 101

The Every Student Succeeds Act or ESSA, requires students to take state tests in reading and math every year in third through eighth grade and once in high school. In Kentucky, students in third through eighth, 10th and 11th grades take the Kentucky Performance Rating for Educational Progress (K-PREP) in English language arts and math. Students in fourth, seventh, and 11th grade also take a test in science. Those in fifth and eighth grade take K-PREP in social studies.

A Focus on Grade Level Skills

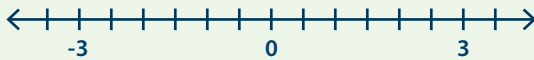
Unlike other tests, K-PREP is focused on grade level material and is aligned to the state standards. The test questions match what students do and learn in the classroom every day throughout the year, which are the skills that are most important for students to learn in order to move on to more challenging content.

K-PREP can be taken online or with paper and pencil. Districts decide how students will take the test. The test includes a variety of different types of questions, including traditional multiple choice, short answer and extended response questions that require students to explain their answer.

Grade 6: Math

Which point on the number line represents the opposite of $-\frac{7}{2}$?

Select a place on the number line to plot the point.



Grade 3: ELA

Which details in paragraph 5 and 6 of the passage best show the main idea that Bat uses the sense of hearing for hunting? Select two correct answers.

[5] Over bushes, under trees, between fence posts, through the tangled hedge she swoops untouched. Bat is at home in the darkness as a fish is in the water. She doesn't need to see—she can hear where she is going. But in the dark, good ears are more useful than eyes.

[6] Bat shouts as she flies, louder than a hammer blow, higher than a squaek. She beams her voice around her like a flashlight, and the echoes come singing back. They carry a sound picture of all her voice has touched. Listening hard, Bat can hear every detail, the smallest twig, the shape of leaves. Gliding and fluttering back and forth, she shouts her torch of sound among the trees, listening for her supper.



Useful Information for All

FAMILIES: Understanding Grade Level Performance

The K-PREP report gives families information on how well their child performed on different sets of skills in each subject. Families can use this information to identify where their child is doing well and where they may need support or practice. This helps families better support learning at home. It can also help them start meaningful conversations with teachers, set goals for each student's areas of improvement and identify resources and strategies that can be used at home and in school to help students make progress.

Questions to Ask the Teacher about Your Child's K-PREP Report:

- What does this mean about my child's learning?
- Is my child on grade level?
- Where does my child need more support or improvement?
- What short-term learning goals should my child meet to show progress?
- How can I support learning at home?



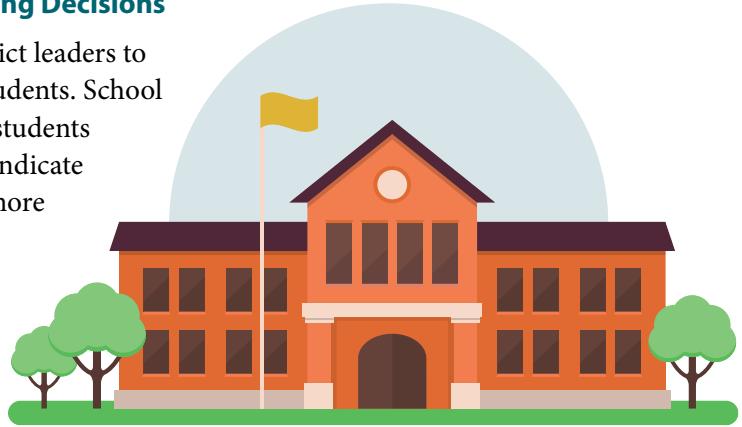
TEACHERS: Informing Instruction

Students take different types of tests throughout the school year. Some students take benchmark or diagnostic tests, such as MAP Growth or i-Ready. These are taken several times a year and measure mastery of important concepts and skills in reading and math. Students take a test at the beginning of the year to identify their “starting point” and again throughout the year to measure their progress. Benchmark tests help teachers identify and address learning gaps early on so students can stay on track to meet grade level expectations. While the K-PREP is only given at the end of the school year, it is one way of showing how much progress students made from the beginning of the year and how well they met grade level expectations.

While teachers use K-PREP results to understand each student's unique needs and support them in the areas where they need extra help, they also help teachers to improve their instruction. Teachers can use the results to look for trends in their students' learning to see what skills or concepts students learned and what content they struggled with. This helps teachers identify what they taught effectively and where they need to improve or change their instructional strategies.

SCHOOL & DISTRICT LEADERS: Informing Decisions

K-PREP results are critical for school and district leaders to make informed decisions about schools and students. School and district level test scores show leaders how students across a school or district are performing and indicate if a certain group of students or schools need more support. This allows them to target additional support or resources to help those schools improve. District leaders can also use K-PREP scores to understand what strategies and changes are working.



STATE LEADERS: Helping Schools Improve

State leaders use K-PREP results to identify schools and districts that need more support and resources. They identify the schools with the lowest performance in the state, as well as schools with certain groups of students that performed much lower on the test than the rest of the students in that school. These schools receive additional funding and resources from the state to support students and teachers. For example, schools may hire more teachers or tutors or they may purchase additional instructional materials and programs, depending on the needs of their students.

Where Can I Go for More Information?

- For more information on the K-Prep, visit [Education.KY.gov/AA/Assessments/Pages/K-PREP.aspx](https://www.education.ky.gov/AA/Assessments/Pages/K-PREP.aspx)
- To see a practice test, visit [Download.PearsonAccessNext.com/KY/KY-PracticeTest.html?links=1](https://www.pearsonaccessnext.com/KY/KY-PracticeTest.html?links=1)
- For ideas on how to support your child's learning at home, visit [PTA.org/FamilyGuide](https://www.pta.org/FamilyGuide)
- For more information about the Kentucky PTA visit [KYPTA.org/](https://www.kypta.org/)

